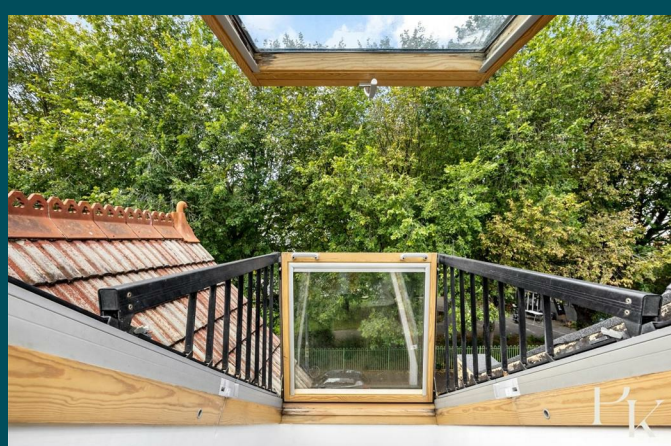




37 Tamworth Road
Hove, BN3 5FJ



37 Tamworth Road

Hove, BN3 5FJ

Guide price £750,000

Guide Price £750,000 - £775,000

Located in the ever-popular Poet's Corner area of Hove, this beautifully refurbished four-bedroom Victorian family home offers a perfect balance of period charm and contemporary living, within easy reach of local amenities and excellent transport links.

Spread across three generously proportioned floors, the home has been thoughtfully modernised while retaining elegant original details. On the ground floor, the welcoming front living room is bathed in natural light from a striking bay window with bespoke shutters, offering views across the open space of Stoneham Park. To the rear, a versatile dining area provides an ideal space for family meals, entertaining guests, or use as a home office. Beyond this, the sleek contemporary kitchen is fitted with integrated appliances, a dining area, and direct access to the private rear garden, designed with practicality and style in mind.

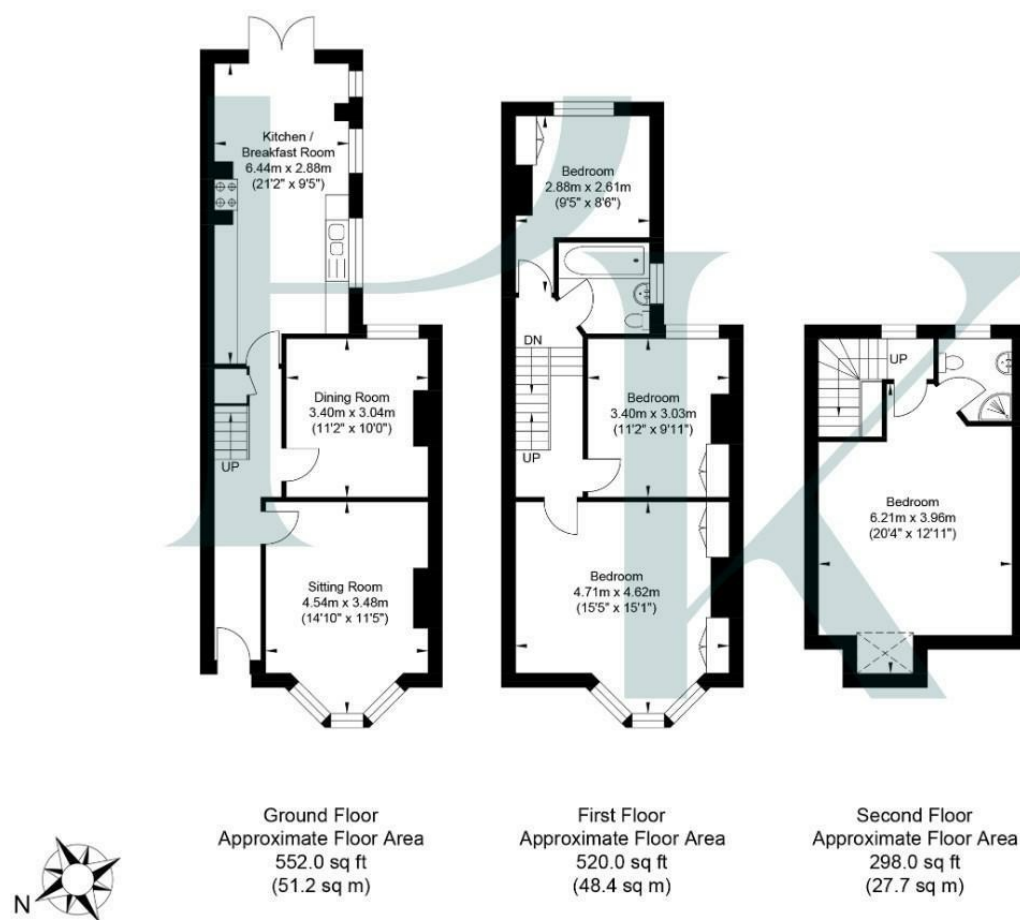
The first floor offers three spacious bedrooms, each benefiting from fitted storage. The principal bedroom boasts its own large bay window, creating a light and airy retreat. A stylish family bathroom with modern finishes completes this level. The top floor is dedicated to a stunning principal suite, featuring a contemporary en-suite shower room and an innovative balcony window, creating a unique space to enjoy fresh air and leafy views, an ideal master bedroom or private guest accommodation.

Outside, the private, low-maintenance garden has been thoughtfully landscaped with herringbone brick paving, clever seating, and a pergola, making it the perfect space for al-fresco dining and entertaining.

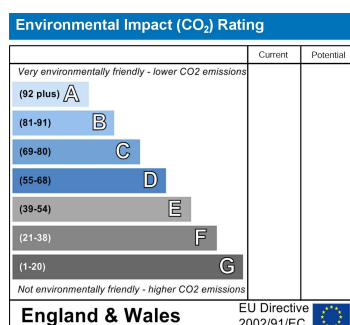
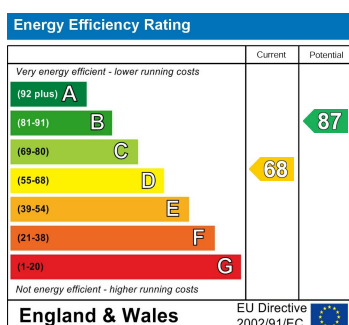
Perfectly positioned, this property sits just moments from the open space of Stoneham Park and the vibrant amenities of Portland Road, including independent cafés, shops, and friendly pubs. Families will appreciate the close proximity to a choice of excellent primary and secondary schools.



Tamworth Road



Approximate Gross Internal Area = 127.3 sq m / 1370.0 sq ft
 Illustration for identification purposes only, measurements are approximate, not to scale.



Pearson
Keehan